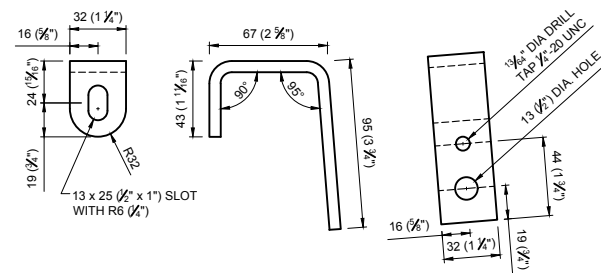
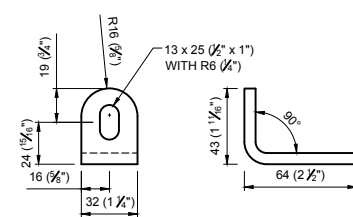


**FRONT VIEW**  
MK. 11, 12 & 13 NOT SHOWN FOR CLARITY

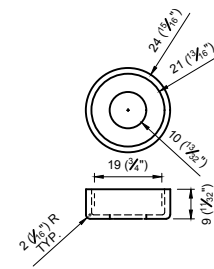
**SECTION**



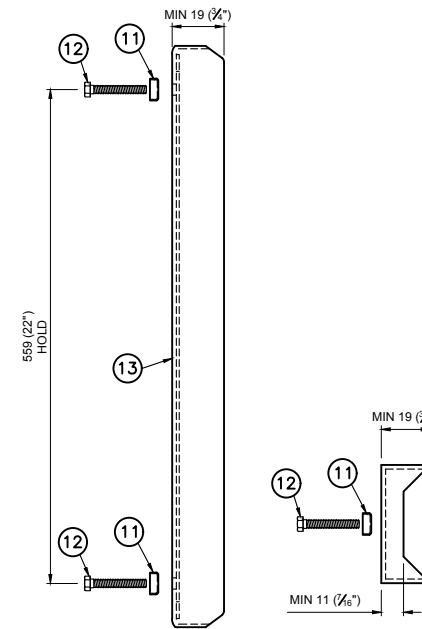
**UPPER BRACKET (8)**



**LOWER BRACKET (9)**



**CUP WASHER (11)**



**SECTION**  
**PLAN**  
**ACCESS PANEL COVER**

BILL OF MATERIALS						
MK. NO.	QTY. REQ'D.	DESCRIPTION	SIZE	MATERIAL	REMARKS	LINE NO.
		<b>ACCESS PANEL</b>				1
1	2	ACCESS PANEL RING	9.5 x 76 x 686 (3/8" x 3" x 27")	CSA G40.21 300W		2
2	1	TERMINAL STRIP BRACKET	4.55 x 32 x 614 (7 GA. x 1 1/4" x 24 3/16")	CSA G40.21 360W	RE-TAP AFTER GALVANIZING	3
3	1	TERMINAL REINFORCING STRIP	3.04 x 25 x 444 (11 GA. x 1" x 17 1/2")	CSA G40.21 350W		4
4	1	HEX BOLT	1/4"-20 UNC FULL THREAD x 1 1/2" LONG	ASTM F593 TYPE 316	RE-TAP AFTER GALVANIZING	5
5	1	HEX BOLT	3/8"-16 UNC FULL THREAD x 1 1/2" LONG	ASTM F593 TYPE 316		6
6	2	HEX NUT	1/4"-20 UNC	ASTM F593 TYPE 316		7
7	2	AU-VE-CO NO. 10054 NUT OR EQUAL	3/8"-16 UNC	STEEL PLATED		8
8	1	UPPER BRACKET	6.35 x 32 x 191 (1/4" x 1 1/4" x 7 1/2")	CSA G40.21 300W		9
9	1	LOWER BRACKET	6.35 x 32 x 102 (1/4" x 1 1/4" x 4")	CSA G40.21 300W		10
10	1	KEEPER BRACKET	6.35 x 32 x 64 (1/4" x 1 1/4" x 2 1/2")	CSA G40.21 300W		11
11	2	TAMPER PROOF CUP WASHER	16 GA.	ASTM B209 GR. 3003-H14	SUITABLE FOR 3/8" BOLT	12
12	2	HEX BOLT	3/8"-16 UNC FULL THREAD x 2 1/2" LONG	ASTM F593 TYPE 316		13
						14
13	1	NON-METALLIC ACCESS PANEL COVER			SUPPLIED BY OTHERS	15

APPROXIMATE TOTAL MASS = 10 kg

**NOTES:**

- ALL MATERIALS, EXCEPT STAINLESS STEEL ITEMS, SHALL BE HOT DIP GALVANIZED IN ACCORDANCE WITH ASTM A123-09 (PLUS LATEST REVISIONS) WITH NET RETENTION OF 610 g/m<sup>2</sup>.
- SHIP WITH MK. 11 & 12 INSTALLED IN MK. 7 (TOP AND BOTTOM).
- GRIND ALL SHARP POINTS AND EDGES.
- WHERE METRIC AND IMPERIAL UNITS ARE SHOWN, IMPERIAL UNITS SHALL TAKE PRECEDENCE.
- NON-METALLIC ACCESS PANEL COVER SUPPLIED BY OTHERS.

V:\Traffic Signals\7. Projects\Projects\Coordination\Product Specification Dwg\New Folder\S-SD-17\_Access\_Panel.dwg

**APCGM**  
Certificate of Authorization  
Dillon Consulting Limited (MB)  
No. 1789 Date: JAN. 14, 2013

**REDUCED DRAWING**  
**N.T.S.**

NO.	REVISIONS	DATE	BY	DATE
3	REVISED BY CITY OF WINNIPEG	7/14/16	JLD	
2	REVISED BY DILLON CONSULTING	1/10/14	CDW	
1	ISSUED BY DILLON CONSULTING	1/14/13	CDW	

B.M. ELEV.	DESIGNED BY CDW		ENGINEER'S SEAL
	DRAWN BY JGW		N/A
	CHECKED BY SSR		
	APPROVED BY -		
		RELEASED FOR CONSTRUCTION	CONSULTANT PROJECT NUMBER
		DATE	12-5954

ENGINEER'S SEAL  
N/A  
CONSULTANT PROJECT NUMBER  
12-5954

**THE CITY OF WINNIPEG**  
PUBLIC WORKS DEPARTMENT

**ACCESS PANEL DETAILS**

CITY DRAWING NUMBER  
S-SD-17

SHEET 17 OF 17  
CONSULTANT DRAWING NUMBER  
N/A